

FIRST GENERATION SHIFT BOOT RETAINER

FITMENT GUIDE

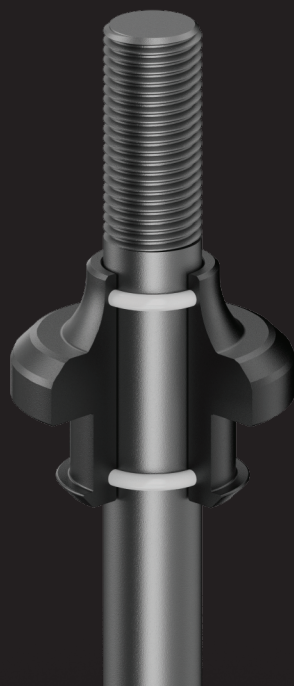
OVERVIEW

The first generation Shift Boot Retainer is available in three sizes: 8MM, 10mm and 12mm. This size refers to the inner diameter of the retainer.



O-RINGS

The Shift Boot Retainer is designed to fit a straight shaft below your threads. It uses two internal o-rings to form a tight fit over the shaft.



In order to use the Shift Boot Retainer, your vehicle must meet the following requirements .

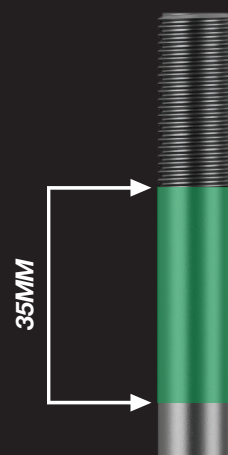
DIAMETER

The diameter of the shaft must be 8mm, 10mm or 12mm.



SHAFT

The diameter must remain 8mm, 10mm or 12mm for 35mm below the threads.



OBSTRUCTIONS

The shaft must be straight and cylindrical with no obstructions.



Below are examples of obstructed shafts. You can see that the shaft does not remain the same diameter within the 35mm section below the threads.

OBSTRUCTIONS



NICE

